

[Skip directly to search](#) [Skip directly to A to Z list](#) [Skip directly to site content](#)

[CDC Home](#)



Centers for Disease Control and Prevention
Your Online Source for Credible Health Information

[Centers for Disease Control and Prevention](#)
[- Your Online Source](#)

[for Credible Health Information](#)

Search The CDC Search Button

Note: Javascript is disabled or is not supported by your browser. For this reason, some items on this page will be unavailable. For more information about this message, please visit this page: [About CDC.gov](#).

[Seasonal Influenza \(Flu\)](#)

[Seasonal Influenza \(Flu\)](#)


- [2009-2010 Flu Season](#)
 - [2009-10 Seasonal Influenza Vaccine Updates](#)
 - [Questions & Answers](#)
- [Influenza: The Disease](#)
 - [Key Facts About Seasonal Flu](#)
 - [Influenza Viruses](#)
 - [Types of Influenza Viruses](#)
 - [How the Flu Virus Can Change](#)
 - [Influenza in Animals](#)
 - [Symptoms & Severity](#)
 - [How Flu Spreads](#)
 - [Flu Season](#)
 - [Questions & Answers](#)
 - [Influenza: The Disease](#)
 - [Estimating Deaths](#)
 - [Types of Flu Viruses](#)
 - [Cold vs. Flu](#)
 - [Flu & Staph Infection](#)
 - [Flu & Other Respiratory Viruses](#)
 - [U.S. Hospitalizations](#)
 - [Influenza Research](#)
 - [Laboratory testing](#)
 - [2009–10 Flu Season](#)
- [Preventing Flu](#)
 - [Vaccination](#)
 - [Key Facts About Seasonal Flu Vaccine](#)
 - [Children, the Flu, and the Flu Vaccine](#)
 - [Caregivers of Children Less Than 6 Months Old](#)
 - [Good Health Habits](#)
 - [Key Facts About Good Health Habits for Preventing Seasonal Flu](#)

- [Cover Your Cough](#)
 - [The Flu: A Guide for Parents](#)
 - [Stopping the Spread of Germs at Home, Work & School](#)
 - [Smoking & Influenza](#)
 - [Antiviral Drugs](#)
 - [Key Facts About Antiviral Drugs and Seasonal Flu](#)
 - [Summary of Side Effects](#)
 - [Antiviral Drugs for Seasonal Flu: Additional Links and Resources](#)
 - [Flu Prevention Toolkit](#)
 - [Staying home when you are sick helps everyone you care about](#)
 - [Questions & Answers](#)
 - [Flu Vaccine: Q&A](#)
 - [Vaccine Dosage & Administration](#)
 - [Vaccine Supply for 2009–10 Season](#)
 - [Vaccine Supply and Distribution in the United States](#)
 - [Vaccine Effectiveness](#)
 - [Flu Shot](#)
 - [Nasal Spray Vaccine \(LAIV\)](#)
 - [Thimerosal](#)
 - [Guillain-Barré Syndrome \(GBS\)](#)
 - [Antiviral Drugs: Key Facts](#)
 - [Antiviral Drugs: Q&A](#)
 - [Antiviral Drug Resistance](#)
 - [Links, Information, & Resources](#)
 - [Good Health Habits](#)
 - [Preventing the Flu: Q&A](#)
- [What To Do If You Get Sick](#)
 - [Diagnosis](#)
 - [Symptoms](#)
 - [Antiviral Drugs](#)
 - [Taking Care of Yourself](#)
 - [Questions & Answers](#)
- [Info for Health Professionals](#)
 - [2009-10 ACIP Recommendations](#)
 - [Primary Changes and Updates in the 2009 ACIP Recommendations](#)
 - [ACIP Recommendations: Introduction and Biology of Influenza](#)
 - [Options for Controlling Influenza](#)
 - [Summary of seasonal influenza vaccination recommendations, 2009: children and adolescents aged 6 months-18 years](#)
 - [Summary of influenza vaccination recommendations, 2009: adults](#)
 - [Recommendations for Using TIV and LAIV During the 2009-10 Influenza Season](#)
 - [Comparisons of LAIV and TIV Efficacy](#)
 - [Influenza Vaccine Composition & Major Differences](#)
 - [Vaccine Supply Considerations](#)
 - [Dosage, Administration, and Storage](#)

- [Influenza Vaccination Coverage Levels](#)
 - [Additional Information about Vaccination of Specific Populations](#)
 - [Persons for Whom Annual Vaccination is Recommended](#)
 - [Persons Who Should Not Be Vaccinated](#)
 - [Timing of Vaccination](#)
 - [Adverse Events After Receipt of TIV](#)
 - [Adverse Events After Receipt of Live, Attenuated Influenza Vaccine \(LAIV\)](#)
- [Vaccination](#)
 - [Influenza Vaccination: A Summary for Clinicians](#)
 - [Seasonal Influenza Vaccine Safety: A Summary for Clinicians](#)
 - [Selecting the Viruses in the Influenza \(Flu\) Vaccine](#)
 - [Large-Scale Influenza Vaccination Clinic Planning](#)
 - [Flu Vaccine Effectiveness](#)
 - [Reallocating Influenza Vaccine](#)
- [Schools & Childcare Providers](#)
 - [Information for Schools](#)
 - [Information for Parents](#)
- [Antiviral Drugs 2009-10](#)
- [Infection Control](#)
 - [Infection Control Guidance for the Prevention & Control of Influenza in Acute-Care Facilities](#)
 - [Preventing the Spread of Influenza \(the Flu\) in Child Care Settings: Guidance for Administrators, Care Providers, & Other Staff](#)
 - [Control of Influenza Outbreaks in Institutions](#)
 - [Infection Control Measures for Preventing & Controlling Influenza Transmission in Long-Term Care Facilities](#)
 - [Settings Where High-Risk Persons & Their Contacts May Be Targeted For Vaccination](#)
 - [Prevention & Control of Influenza in the Peri- and Postpartum Settings](#)
 - [Interim Guidance for the Use of Masks to Control Influenza Transmission](#)
 - [Respiratory Hygiene/Cough Etiquette](#)
- [Clinical Description & Lab Diagnosis](#)
 - [Role of Laboratory Diagnosis](#)
 - [Influenza Symptoms and Laboratory Diagnostic Procedures](#)
 - [Rapid Diagnostic Testing: Information for Health Care Professionals](#)
 - [Rapid Diagnostic Testing: Information for Clinical Laboratory Directors](#)
 - [Interim Guidance for Influenza Diagnostic Testing During the 2008-09 Influenza Season](#)
- [Seasonal Influenza and Staph Infections](#)
- [Flu Activity & Surveillance](#)
 - [Current United States Flu Activity Map](#)
 - [Weekly U.S. Influenza Surveillance Report](#)
 - [International Influenza Surveillance](#)
 - [United States Surveillance Data: 1997-1998 through 2005-2006 Seasons](#)
- [Training](#)

- [References & Resources](#)
- [National Influenza Vaccination Week \(NIVW\)](#)
 - [2009–10 NIVW Activities](#)
 - [Submit Your Own Event for NIVW!](#)
 - [Daily Materials](#)
 - [NIVW Media Toolkit](#)
 - [Web Tools](#)
 - [Resources for Health Professionals & Partners](#)
 - [Matte Articles](#)
- [What's New & Updated!](#)
- [Free Resources](#)
 - [Print Materials](#)
 - [Additional Print Materials](#)
 - [Web Tools](#)
 - [Video/Audio Tools](#)

Other Flu Web sites

- [2009 H1N1 Flu](#)
- [Flu.gov](#) 
- [Avian Flu](#)
- [Canine Flu](#)
- [Swine Flu \(in pigs\)](#)

- [Seasonal Influenza \(Flu\)](#)
- [Info for Health Professionals](#)
- [Flu Activity & Surveillance](#)

- Text size:
 - s
 - m
 - l
 - xl

- -
- -
- -
 - Add this to...
 - [Favorites](#)
 - [Del.icio.us](#)
 - [Digg](#)
 - [Facebook](#)
 - [Google Bookmarks](#)
 - [Yahoo MyWeb](#)
- -



[For Questions About Seasonal Influenza \(Flu\), Contact Us](#)



2009-2010 Influenza Season Week 3 ending January 23, 2010

All data are preliminary and may change as more reports are received.

Synopsis:

During week 3 (January 17-23, 2010), influenza activity remained at approximately the same levels this week in the U.S.

- 164 (4.6%) specimens tested by U.S. World Health Organization (WHO) and National Respiratory and Enteric Virus Surveillance System (NREVSS) collaborating laboratories and reported to CDC/Influenza Division were positive for influenza.
- All subtyped influenza A viruses reported to CDC were 2009 influenza A (H1N1) viruses.
- The proportion of deaths attributed to pneumonia and influenza (P&I) was above the epidemic threshold.
- Five influenza-associated pediatric deaths were reported. Four deaths were associated with 2009 influenza A (H1N1) virus infection and one was associated with an influenza A virus for which the subtype was undetermined.
- The proportion of outpatient visits for influenza-like illness (ILI) was 1.7% which is below the national baseline of 2.3%. Two of the 10 regions (Regions 4 and 9) reported ILI equal to their region-specific baseline.
- No states reported widespread influenza activity, five states reported regional influenza activity, Puerto Rico and nine states reported local influenza activity, the District of Columbia, Guam, and 33 states reported sporadic influenza activity, and the U.S. Virgin Islands and three states reported no influenza activity.

National and Regional Summary of Select Surveillance Components

HHS Surveillance Regions*	Data for current week			Data cumulative since August 30, 2009 (Week 35)*						
	Out-patient ILI†	% positive for flu‡	Number of jurisdictions reporting regional or widespread activity§	A (H1)	A (H3)	2009 A (H1N1)	A (unabable to subtype) ¥	A (Subtyping not performed)	B	Pediatric Deaths
Nation	Normal	4.6 %	5 of 54	32	55	62,19	334	20,582	241	248

		7									
Region 1	Normal	2.0 %	0 of 6	4	2	3,353	14	477	10	6	
Region 2	Normal	4.6 %	1 of 4	8	4	1,559	0	2,027	10	16	
Region 3	Normal	3.2 %	1 of 6	3	10	10,610	48	1,451	18	13	
Region 4	Elevated	8.9 %	3 of 8	0	5	7,567	94	4,209	71	45	
Region 5	Normal	2.2 %	0 of 6	8	23	9,371	52	1,557	15	36	
Region 6	Normal	3.7 %	0 of 5	0	3	3,896	60	4,801	45	67	
Region 7	Normal	2.8 %	0 of 4	3	1	3,323	3	778	3	8	
Region 8	Normal	2.0 %	0 of 6	4	2	9,698	0	3,780	52	15	
Region 9	Elevated	3.8 %	0 of 5	0	4	8,234	49	1,182	15	32	
Region 10	Normal	3.4 %	0 of 4	2	1	4,586	14	320	2	10	

*Influenza season officially begins each year at week 40. This season data from week 35 will be included to show the trend of influenza activity before the official start of the 2009-10 influenza season.

**HHS regions (Region 1 CT, ME, MA, NH, RI, VT; Region 2: NJ, NY, Puerto Rico, US Virgin Islands; Region 3: DE, DC, MD, PA, VA, WV; Region 4: AL, FL, GA, KY, MS, NC, SC, TN; Region 5: IL, IN, MI, MN, OH, WI; Region 6: AR, LA, NM, OK, TX; Region 7: IA, KS, MO, NE; Region 8: CO, MT, ND, SD, UT, WY; Region 9: AZ, CA, Guam, HI, NV; and Region 10: AK, ID, OR, WA).

† Elevated means the % of visits for ILI is at or above the national or region-specific baseline

‡ National data are for current week; regional data are for the most recent three weeks

§ Includes all 50 states, the District of Columbia, Guam, Puerto Rico, and U.S. Virgin Islands

¥ Subtyping results for the majority of specimens in this category were inconclusive because of low virus titers.

[U.S. Virologic Surveillance:](#)

WHO and NREVSS collaborating laboratories located in all 50 states and Washington D.C., report to CDC the number of respiratory specimens tested for influenza and the number positive by influenza type and subtype. The results of tests performed during the current week are summarized in the table below.

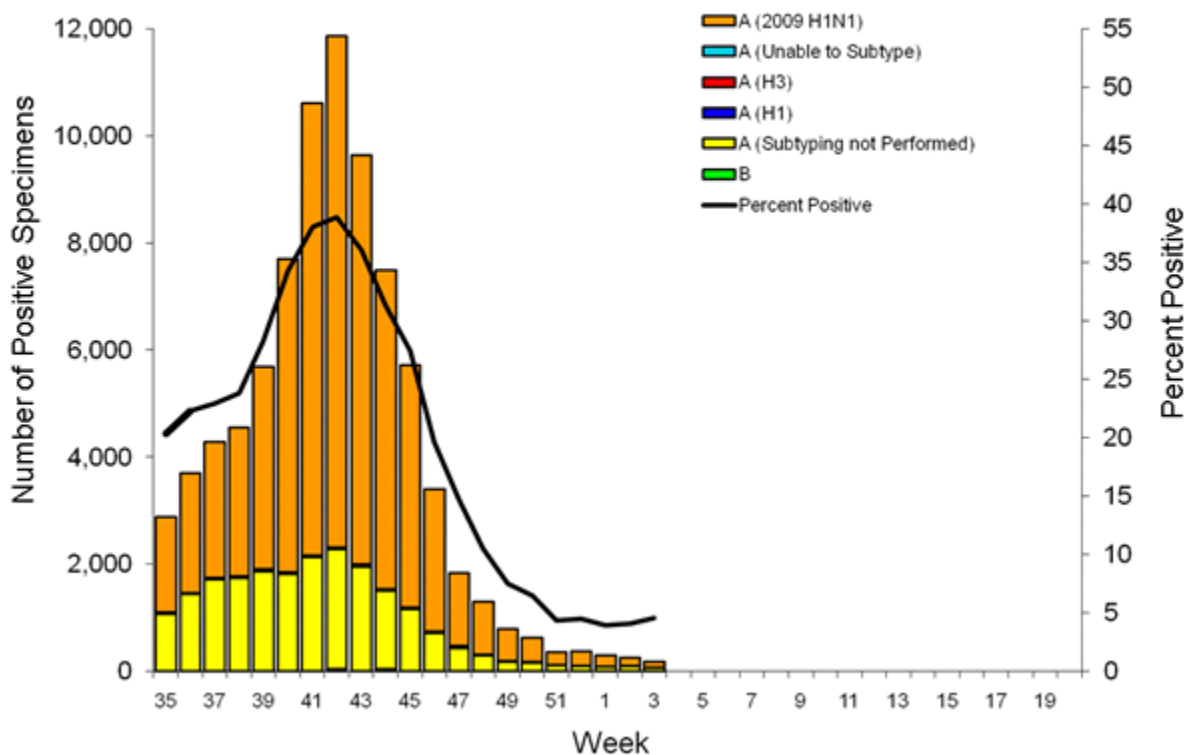
	Week 3
No. of specimens tested	3,588
No. of positive specimens (%)	164 (4.6%)
Positive specimens by type/subtype	

Influenza A	162 (98.8%)
A (2009 H1N1)	98 (60.5%)
A (subtyping not performed)	62 (38.3%)
A (unable to subtype)*	2 (1.2%)
A (H3)	0 (0.0%)
A (H1)	0 (0.0%)
Influenza B	2 (1.2%)

*Subtyping results for both specimens in this category were inconclusive because of low levels of viral RNA.

During week 3, influenza B viruses co-circulated at low levels with 2009 influenza A (H1N1) viruses. All subtyped influenza A viruses reported to CDC this week were 2009 influenza A (H1N1) viruses.

Influenza Positive Tests Reported to CDC by U.S. WHO/NREVSS Collaborating Laboratories, National Summary, 2009-10

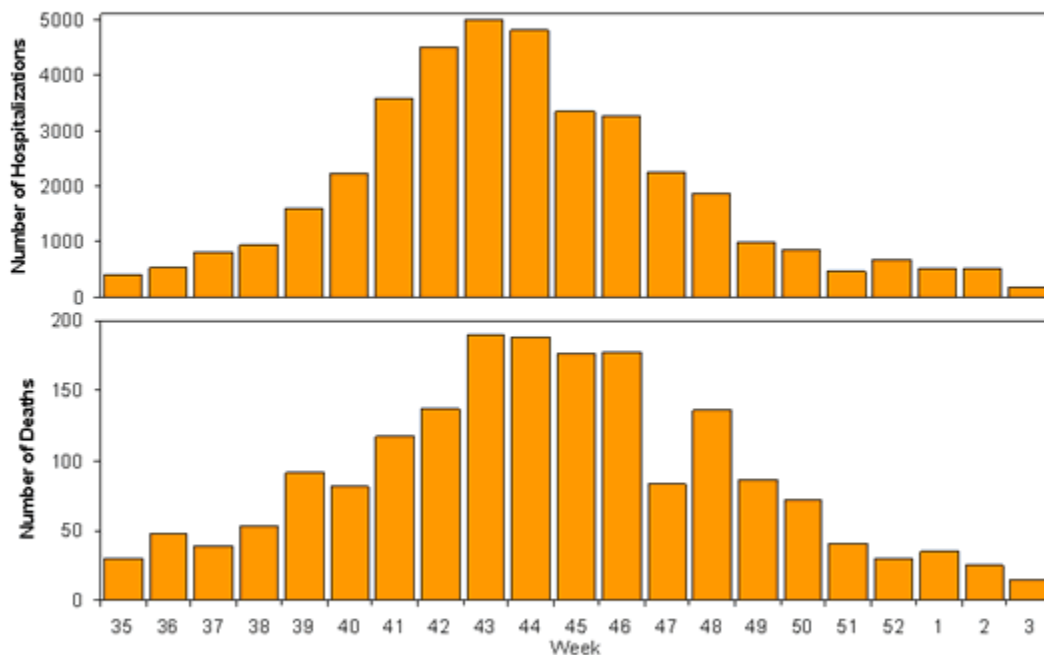


[View WHO-NREVSS Regional Bar Charts](#) | [View Chart Data](#) | [View Full Screen](#) | [View PowerPoint Presentation](#) 

Pneumonia and Influenza Hospitalization and Death Tracking:

The Aggregate Hospitalization and Death Reporting Activity (AHDRA) system was implemented on August 30, 2009, and replaces the weekly report of laboratory confirmed 2009 H1N1-related hospitalizations and deaths that began in April 2009. Jurisdictions can now report to CDC counts of hospitalizations and deaths resulting from all types or subtypes of influenza, not just those from 2009 H1N1 influenza virus. To allow jurisdictions to implement the new case definition, counts were reset to zero on August 30, 2009. From August 30, 2009 – January 23, 2010, 39,386 laboratory-confirmed influenza-associated hospitalizations and 1,850 laboratory-confirmed influenza-associated deaths were reported to CDC. CDC will continue to use its traditional surveillance systems to track the progress of the 2009-10 influenza season.

Weekly Laboratory-Confirmed Influenza-Associated Hospitalizations and Deaths Reported to AHDRA, National Summary, August 30, 2009 – January 23, 2010



[View Full Screen](#) | [View Chart Data](#) | [View PowerPoint Presentation](#) 

Antigenic Characterization:

CDC has antigenically characterized one seasonal influenza A (H1N1), eight influenza A (H3N2), seven influenza B, and 1,056 2009 influenza A (H1N1) viruses collected since September 1, 2009.

One seasonal influenza A (H1N1) virus was tested and is related to the influenza A (H1N1) component of the 2009-10 Northern Hemisphere influenza vaccine (A/Brisbane/59/2007).

The eight influenza A (H3N2) viruses tested showed reduced titers with antisera produced against A/Brisbane/10/2007, the 2009-2010 Northern Hemisphere influenza A (H3N2) vaccine component, and were antigenically related to A/Perth/16/2009, the WHO recommended influenza A (H3N2) component of the 2010 Southern Hemisphere vaccine formulation.

Influenza B viruses currently circulating globally can be divided into two distinct lineages represented by the B/Yamagata/16/88 and B/Victoria/02/87 viruses. The influenza B component of the 2009-10 vaccine belongs to the B/Victoria lineage. The seven influenza B viruses tested belong to the B/Victoria lineage and are related to the influenza vaccine component for the 2009-10 Northern Hemisphere influenza vaccine (B/Brisbane/60/2008).

One thousand fifty-four (99.8%) of 1,056 2009 influenza A (H1N1) viruses tested are related to the A/California/07/2009 (H1N1) reference virus selected by WHO as the 2009 H1N1 vaccine virus. Two viruses (0.3%) tested showed reduced titers with antiserum produced against A/California/07/2009.

Annual influenza vaccination is expected to provide the best protection against those virus strains that are related to the vaccine strains, but limited to no protection may be expected when the vaccine and circulating virus strains are so different as to be from different lineages. Antigenic characterization of 2009 influenza A (H1N1) viruses indicates that these viruses are only distantly related antigenically and genetically to seasonal influenza A (H1N1) viruses, suggesting that little to no protection would be expected from vaccination with seasonal influenza vaccine. It is too early in the influenza season to determine if seasonal influenza viruses will circulate widely or how well the seasonal vaccine and circulating strains will match.

Antiviral Resistance:

Since September 1, 2009, one seasonal influenza A (H1N1), eight influenza A (H3N2), six influenza B, and 858 2009 influenza A (H1N1) virus isolates have been tested for resistance to the neuraminidase inhibitors (oseltamivir and zanamivir), and 2,168 2009 influenza A (H1N1) original clinical samples were tested for a single known mutation in the virus that confers oseltamivir resistance. In addition, one seasonal influenza A (H1N1), 10 influenza A (H3N2), and 1,056 2009 influenza A (H1N1) virus isolates have been tested for resistance to the adamantanes (amantadine and rimantadine). The results of antiviral resistance testing performed on these viruses are summarized in the table below. Additional laboratories perform antiviral testing and report their results to CDC and positive results from that testing are included in the footnote.

Antiviral Resistance Testing Results on Samples Collected Since September 1, 2009.

	Samples tested (n)	Resistant Viruses, Number (%)	Samples tested (n)	Resistant Viruses, Number (%)	Samples tested (n)	Resistant Viruses, Number (%)
		Oseltamivir		Zanamivir		Adamantanes
Seasonal Influenza A (H1N1)	1	1 (100.0)	0	0 (0)	1	0 (0)
Influenza A (H3N2)	8	0 (0)	0	0 (0)	10	10 (100.0)
Influenza B	6	0 (0)	0	0 (0)	N/A*	N/A*
2009 Influenza A (H1N1)	3,026	41†‡ (1.4)	858	0 (0)	1,056	1,053 (99.7)

*The adamantanes (amantadine and rimantadine) are not effective against influenza B viruses.

†Two screening tools were used to determine oseltamivir resistance: sequence analysis of viral genes or a neuraminidase inhibition assay.

‡Additional laboratories perform antiviral resistance testing and report their results to CDC.

Three additional oseltamivir resistant 2009 influenza A (H1N1) virus has been identified by these laboratories since September 1, 2009, bringing the total number to 44.

All subtyped influenza A viruses reported during week 3 were 2009 influenza A (H1N1) viruses, and nearly all of 2009 H1N1 viruses tested since April 2009 have been resistant to the adamantanes (amantadine and rimantadine).

Antiviral treatment with oseltamivir or zanamivir is recommended for all patients with confirmed or suspected influenza virus infection who are hospitalized or who are at higher risk for influenza complications. Additional information on antiviral recommendations for treatment and chemoprophylaxis of influenza virus infection is available at <http://www.cdc.gov/h1n1flu/recommendations.htm>.

2009 influenza A (H1N1) viruses were tested for oseltamivir resistance by a neuraminidase inhibition assay and/or detection of genetic sequence mutation, depending on the type of specimen tested. Original clinical samples were examined for a single known mutation in the virus that confers oseltamivir resistance in currently circulating seasonal influenza A (H1N1) viruses, while influenza virus isolates were tested using a neuraminidase inhibition assay that determines the presence or absence of neuraminidase inhibitor resistance, followed by neuraminidase gene sequence analysis of resistant viruses.

The majority of 2009 influenza A (H1N1) viruses are susceptible to the neuraminidase inhibitor antiviral medication oseltamivir; however, rare sporadic cases of oseltamivir resistant 2009 influenza A (H1N1) viruses have been detected worldwide. A total of 54 cases of oseltamivir resistant 2009 influenza A (H1N1) viruses have been identified in the United States since April

2009. No new cases have been newly identified since last week. Forty-four of these specimens were collected after September 1, 2009. The proportion of oseltamivir-resistant 2009 H1N1 viruses does not represent the prevalence of oseltamivir-resistant 2009 H1N1 in the U.S. Most cases were tested because drug resistance was suspected. All tested viruses retain their sensitivity to the neuraminidase inhibitor zanamivir. Of the 54 total cases identified since April 2009, 42 patients had documented exposure to oseltamivir through either treatment or chemoprophylaxis, eight patients are under investigation to determine exposure to oseltamivir, three patients had no documented oseltamivir exposure, and in one patient exposure can not be determined. Occasional development of oseltamivir resistance during treatment or prophylaxis is not unexpected. Enhanced surveillance, an increased availability of testing performed at CDC, and an increasing number of public health and other clinical laboratories performing antiviral resistance testing increase the number of cases of oseltamivir resistant 2009 influenza A (H1N1) viruses detected. All cases are investigated to assess the spread of resistant strains in the community.

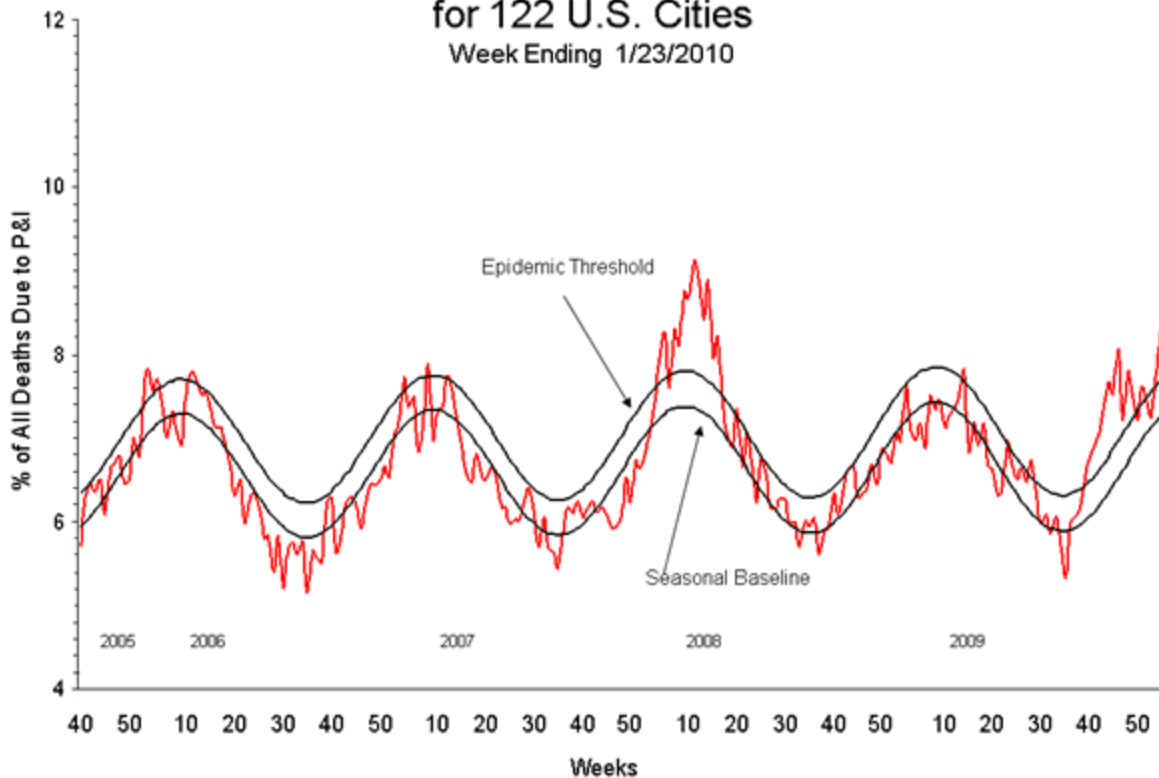
To prevent the spread of antiviral resistant virus strains, CDC reminds clinicians and the public of the need to continue hand and cough hygiene measures for the duration of any symptoms of influenza, even while taking antiviral medications

<http://www.cdc.gov/mmwr/preview/mmwrhtml/mm5832a3.htm>.

Pneumonia and Influenza (P&I) Mortality Surveillance

During week 3, 8.3% of all deaths reported through the 122-Cities Mortality Reporting System were due to P&I. This percentage was above the epidemic threshold of 7.7% for week 3, and is the second consecutive week that the percentage of P&I deaths has been above the epidemic threshold.

Pneumonia and Influenza Mortality for 122 U.S. Cities Week Ending 1/23/2010



[View Full Screen](#) | [View PowerPoint Presentation](#) 

Influenza-Associated Pediatric Mortality

Five influenza-associated pediatric deaths were reported to CDC during week 3 (New York [4] and Wisconsin). Four deaths were associated with 2009 influenza A (H1N1) virus infection and one was associated with an influenza A virus for which the subtype was undetermined. The deaths reported during week 3 occurred between November 8, 2009 and January 2, 2010.

Since August 30, 2009, CDC has received 248 reports of influenza-associated pediatric deaths that occurred during the current influenza season (45 deaths in children less than 2 years old, 27 deaths in children 2-4 years old, 92 deaths in children 5-11 years old, and 84 deaths in children 12-17 years old). Two hundred three (82%) of the 248 deaths were due to 2009 influenza A (H1N1) virus infections, 44 were associated with an influenza A virus for which the subtype is undetermined, and one was associated with an influenza B virus infection. A total of 263 deaths in children associated with 2009 influenza A (H1N1) virus infection have been reported to CDC.

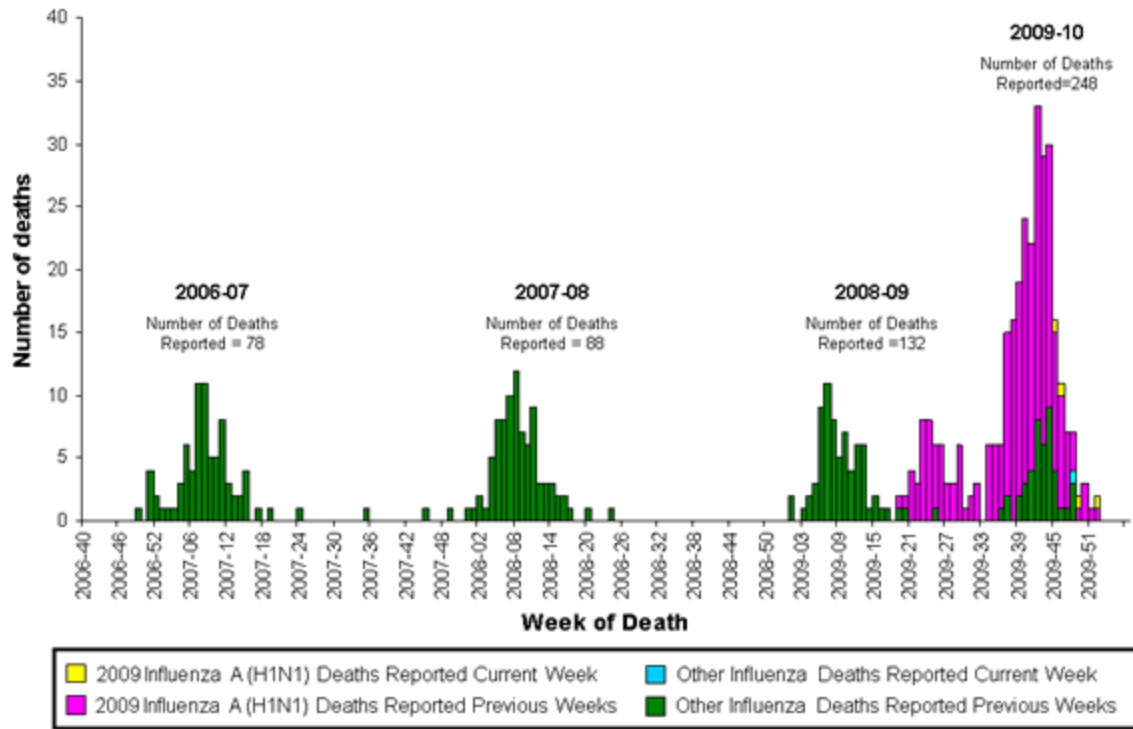
Among the 248 deaths in children, 127 children had specimens collected for bacterial culture from normally sterile sites and 41 (32.3%) of the 127 were positive; *Streptococcus pneumoniae* was identified in 11 (26.8%) of the 41 children and *Staphylococcus aureus* was identified in 11 (26.8%) of the 41 children. Two *S. aureus* isolates were sensitive to methicillin, eight were

methicillin resistant, and one did not have sensitivity testing performed. Twenty-seven (65.9%) of the 41 children with bacterial coinfections were five years of age or older, and 14 (34.1%) of the 41 children were 12 years of age or older.

Laboratory-Confirmed Influenza-Associated Pediatric Deaths by Date and Type/Subtype of Influenza.

Date	2009 H1N1 Influenza	Influenza A- Subtype Unknown	Seasonal Influenza	Total
Number of Deaths REPORTED for Current Week – Week 3 (Week ending January 23, 2010)	4	1	0	5
Number of Deaths OCCURRED since August 30, 2009	203	44	1	248
Number of Deaths OCCURRED since April 26, 2009	263	47	2	312

Number of Influenza-Associated Pediatric Deaths by Week of Death: 2006-07 season to present



[View Full Screen](#) | [View PowerPoint Presentation](#) 

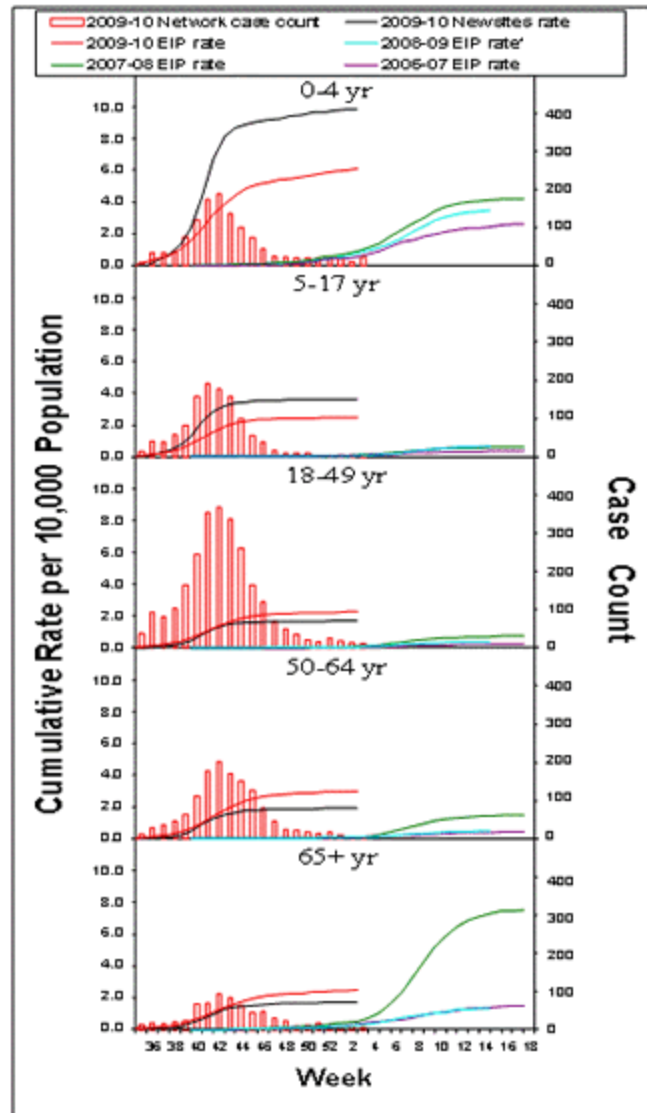
Influenza-Associated Hospitalizations

Laboratory-confirmed influenza-associated hospitalizations are monitored using a population-based surveillance network that includes the 10 Emerging Infections Program (EIP) sites (CA, CO, CT, GA, MD, MN, NM, NY, OR and TN) and 6 new sites (IA, ID, MI, ND, OK and SD).

During September 1, 2009 – January 23, 2010, the following preliminary laboratory-confirmed overall influenza associated hospitalization rates were reported by EIP and the new sites (*rates include influenza A, influenza B, and 2009 influenza A (H1N1)*):

Rates [EIP (new sites)] for children aged 0-4 years and 5-17 years were 6.1 (9.8) and 2.5 (3.6) per 10,000, respectively. Rates [EIP (new sites)] for adults aged 18-49 years, 50-64 years, and ≥ 65 years were 2.3 (1.7), 3.0 (1.9) and 2.5 (1.7) per 10,000, respectively.

EIP Influenza Laboratory-Confirmed Cumulative Hospitalization Rates 2009-10 and Previous Three Seasons*



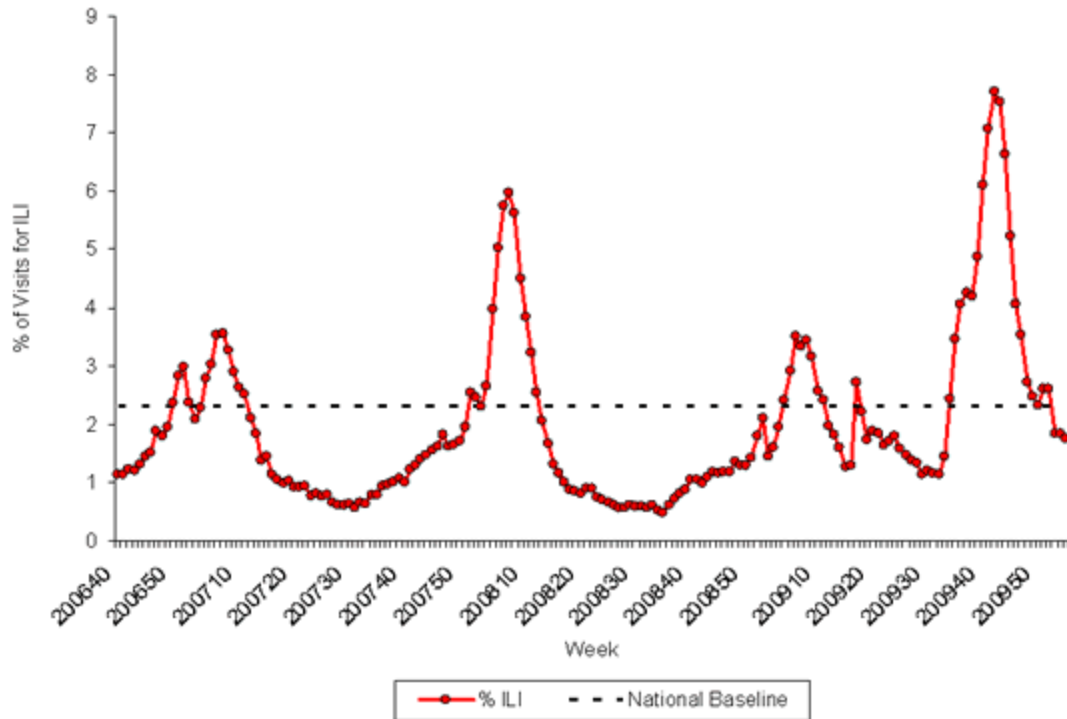
*The 2008-09 EIP rate ended as of April 14, 2009 due to the onset of the 2009 H1N1 season.

[View Full Screen](#) | [View PowerPoint Presentation](#) 

[Outpatient Illness Surveillance:](#)

Nationwide during week 3, 1.7% of patient visits reported through the U.S. Outpatient Influenza-like Illness Surveillance Network (ILINet) were due to influenza-like illness (ILI). This percentage is below the national baseline of 2.3%.

Percentage of Visits for Influenza-like Illness (ILI) Reported by the U.S. Outpatient Influenza-like Illness Surveillance Network (ILINet), Weekly National Summary, October 1, 2006 – January 23, 2010



[View ILINet Regional Charts](#) | [View Chart Data](#) | [View Full Screen](#) | [View PowerPoint Presentation](#) 

On a regional level, the percentage of outpatient visits for ILI ranged from 0.5% to 2.8% during week 3. Two of the 10 regions (Regions 4 and 9) reported a proportion of outpatient visits for ILI equal to their region-specific baseline levels. Regions 1, 2, 3, 5, 6, 7, 8, and 10 reported ILI below their region-specific baselines. (Note: Use of the national baseline for regional ILI data or regional baselines for state-level data is not appropriate.)

[Geographic Spread of Influenza as Assessed by State and Territorial Epidemiologists:](#)

The influenza activity reported by state and territorial epidemiologists indicates geographic spread of both seasonal influenza and 2009 influenza A (H1N1) viruses and does not measure the severity of influenza activity.

- During week 3, the following influenza activity was reported:
 - No states reported widespread influenza activity.
 - Regional influenza activity was reported by five states (Alabama, Georgia, New Jersey, South Carolina, and Virginia).

- Local influenza activity was reported by Puerto Rico and nine states (Hawaii, Louisiana, Nevada, New Mexico, North Carolina, Oklahoma, Pennsylvania, Tennessee, and Utah).
- Sporadic influenza activity was reported by the District of Columbia, Guam, and 33 states (Alaska, Arizona, Arkansas, California, Colorado, Connecticut, Delaware, Florida, Illinois, Indiana, Iowa, Kansas, Kentucky, Maine, Maryland, Massachusetts, Michigan, Minnesota, Mississippi, Missouri, Montana, New Hampshire, New York, North Dakota, Ohio, Rhode Island, South Dakota, Texas, Vermont, Washington, West Virginia, Wisconsin, and Wyoming).
- The U.S. Virgin Islands and three states (Idaho, Nebraska, and Oregon) reported no influenza activity.

[Flu Activity data in XML Format](#) | [View Full Screen](#)

A description of surveillance methods is available at:

<http://www.cdc.gov/flu/weekly/fluactivity.htm>

File Formats Help:



[How do I view different file formats \(PDF, DOC, PPT, MPEG\) on this site? »](#)

- [Email](#)
- [Print](#)
- [Share](#)
 - Add this to...
 - [Favorites](#)
 - [Del.icio.us](#)
 - [Digg](#)
 - [Facebook](#)
 - [Google Bookmarks](#)
 - [Yahoo MyWeb](#)
- [Updates](#)
- [Subscribe](#)
- [Listen](#)

-  [Download](#)

[For Questions About Seasonal Influenza \(Flu\), Contact Us](#)

- Page last reviewed: January 29, 2010
- Page last updated: January 29, 2010
- Content source: [Centers for Disease Control and Prevention](#)

- [Home](#)
- [A-Z Index](#)
- [Site Map](#)
- [Policies](#)
- [About CDC.gov](#)
- [Link to Us](#)
- [All Languages](#)
- [CDC Mobile](#)
- [Contact CDC](#)



*Centers for Disease Control and Prevention 1600 Clifton Rd. Atlanta, GA 30333, USA
800-CDC-INFO (800-232-4636) TTY: (888) 232-6348, 24 Hours/Every Day - cdcinfo@cdc.gov*

A-Z Index

1. [A](#)
2. [B](#)
3. [C](#)
4. [D](#)
5. [E](#)
6. [F](#)
7. [G](#)
8. [H](#)
9. [I](#)
10. [J](#)
11. [K](#)
12. [L](#)
13. [M](#)
14. [N](#)
15. [O](#)
16. [P](#)
17. [Q](#)
18. [R](#)
19. [S](#)

20. [T](#)
21. [U](#)
22. [V](#)
23. [W](#)
24. [X](#)
25. [Y](#)
26. [Z](#)
27. <#>